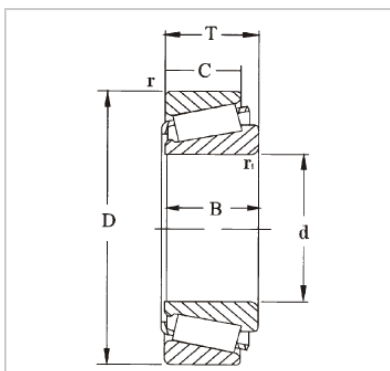


## Single Row Tapered Roller Bearing

31300 Series-31328XJ2



WUXI GUANGQIANG BEARING TRADE CO.,LTD

Обозначение	<b>31328XJ2</b>
Основные размеры (мм)	
d1	140
D	300
B	77
Номинальная грузоподъемность (кН)	
dyc (Cr)	693
stc (Cор)	900
Пу	88
Номинальная скорость (об / мин)	
Рейтинги скорости	1500
Ограничение скорости	2200
Вес (кг)	24.5
ISO335	
Размеры (ABMA)	7GB
Размеры (мм)	
d	140
d1 □	219
B	70
C	47
r1,2 (мин)	5
r3,4 (мин)	4
a	90
Размеры абатмента и галтели (мм)	
да (макс)	169
дБ (мин)	160
Да (мин)	235
Да (макс.)	283
Дб (мин)	280
Са (мин)	9
Сb (мин)	30
ра (макс)	4
rb (макс.)	<b>3</b>
Ценить	
e	0.83
Y	0.72
Эй	0.4

## GQZ high quality 31300 Series Single Row Tapered Roller Bearing

Tapered roller bearings have tapered inner and outer raceways and rollers to handle simultaneous radial and thrust loads. Their axial load carrying capacity is directly related to the contact angle of the rollers and raceway shaft.

They are available in single-row, double-row, and four-row designs. The individual parts of tapered

roller bearings are commonly sold separately as cups and cones. Cones contain the roller assembly and inner ring while cups include the outer ring. Full assembly units contain both the cup and cone. As separable bearings, different designs and sizes are available to accommodate a variety of applications.

Wuxi Guangqiang Bearing Trade Co.,Ltd-Tel:86-510-82601571-Email:gq@gqbearing.com,shary@gqbearing.com-http://www.bearing-asia.com